



SUSTAINABILITY

AT SIERRA NEVADA



OVERVIEW



History of Sierra
Nevada



Defining
Sustainability



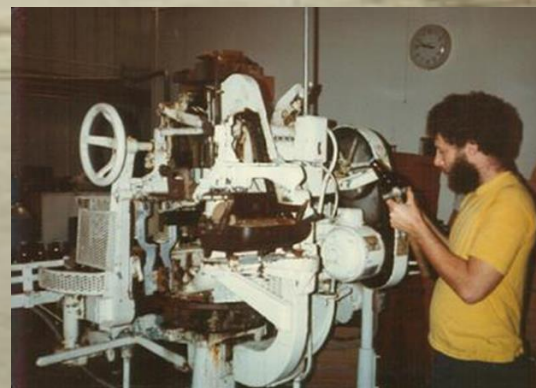
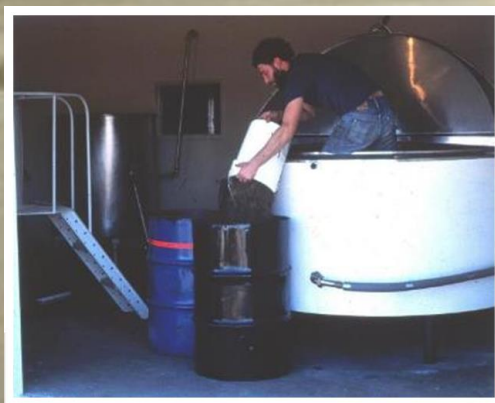
Sustainability Initiatives



Sharing Our Values



Ken Grossman











SNAPSHOT

- 3rd largest craft brewery
- 10th largest brewery overall
- Independent/family-owned
- ~1100 employees
- Pioneer/mentor in craft
- Leader in craft beer sustainability



NATURAL & ORGANIC
**STRANGE
BEAST**
HARD KOMBUCHA



SIERRA NEVADA BREWING CO.

DEFINING "SUSTAINABILITY"

Meet the needs of the present without compromising the ability of future generations to meet their own

Environmental Resiliency

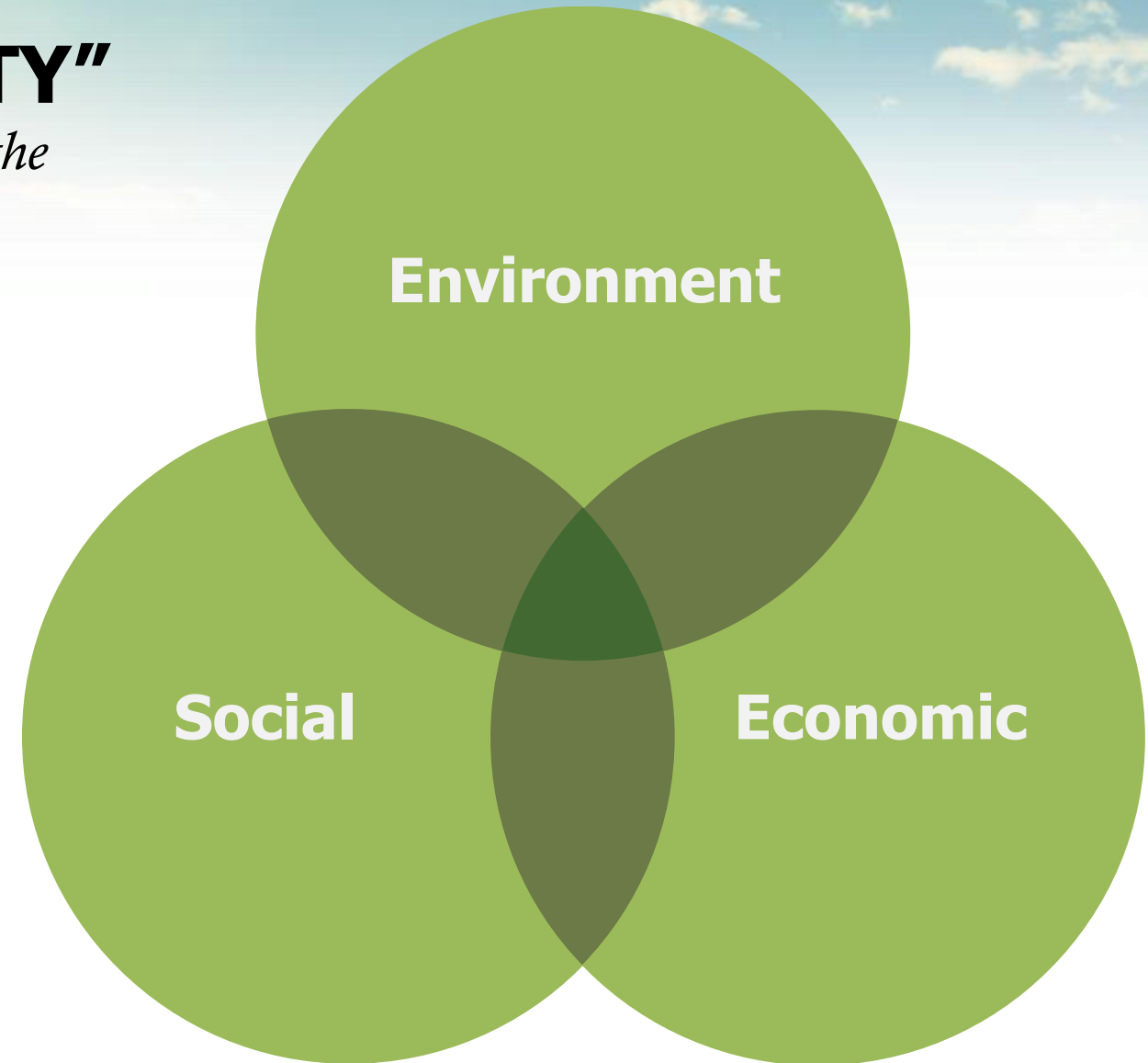
- GHG Reduction
- Closed Loop Philosophy
- Zero Waste

Social Responsibility

- Employee wellness & safety
- Diversity, Equity & Inclusion
- Community engagement & philanthropy
- Advocacy

Economic Stability

- Operating costs are met with the ability to reinvest, give back, & plan for the future



SUSTAINABILITY INITIATIVES AIM TO BE:





HIGHLIGHTS



ONSITE ENERGY



ZERO WASTE

99.6% DIVERSION

- First TRUE Platinum Zero Waste business

THE ZERO WASTE HIERARCHY 7.0



© Zero Waste International Alliance zwia.org/zw





ONSITE COMPOSTING

RECYCLING COOPERATIVE

Sierra Nevada led the effort to establish a recycling drop-off location for craft breweries in Western North Carolina.

- Craft breweries and other businesses within 60 mile radius
- Many brewery waste streams are not-recyclable in traditional recycling programs unless separated and collected in bulk
- Combines waste streams of several small businesses to generate volume and clean material streams
- Allows breweries to divert waste that otherwise would be landfilled





EFFICIENCY



HEAT RECOVERY/REUSE

CONSERVATION & REUSE



RAINWATER CAPTURE



ONSITE WASTEWATER TREATMENT



BIOGAS RECOVERY



Brewhouse



Onsite Wastewater
Treatment




Biogas Recovery



Boilers/Microturbines

CO₂ RECOVERY





ESTATE AGRICULTURE





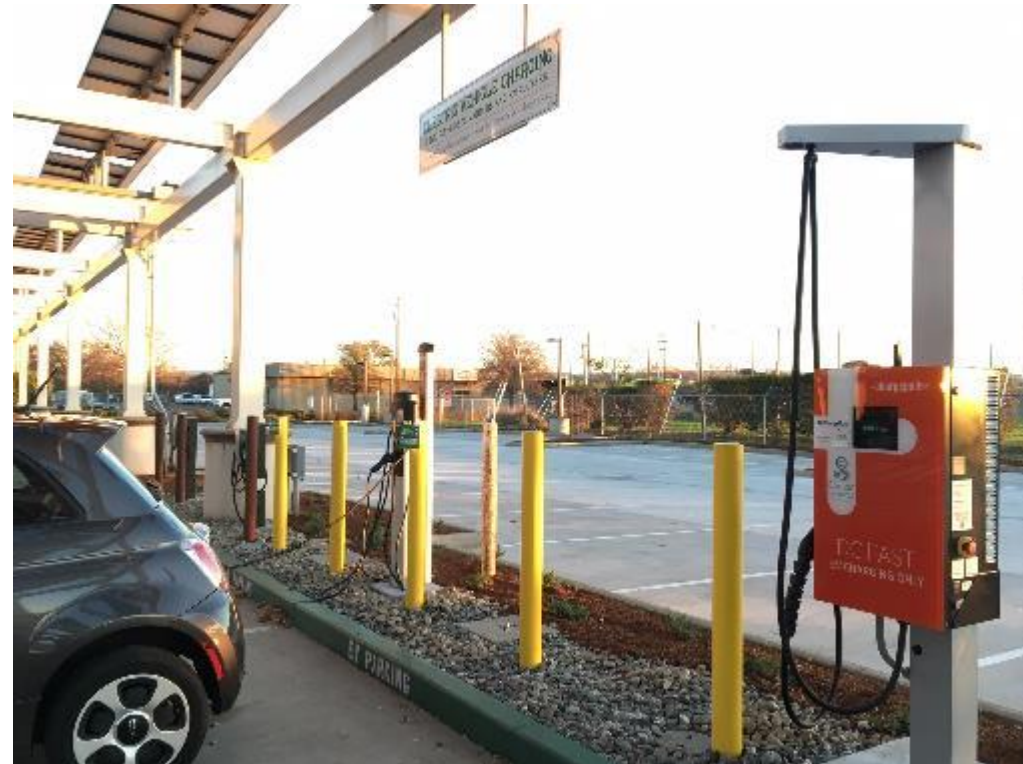


TRANSPORTATION & EMISSIONS



Reducing Individual Driver Emissions

- Employees that use alternative transportation to commute earn up to \$2/day (up to \$60/quarter)
- Includes: biking, walking, carpooling, and mass transit

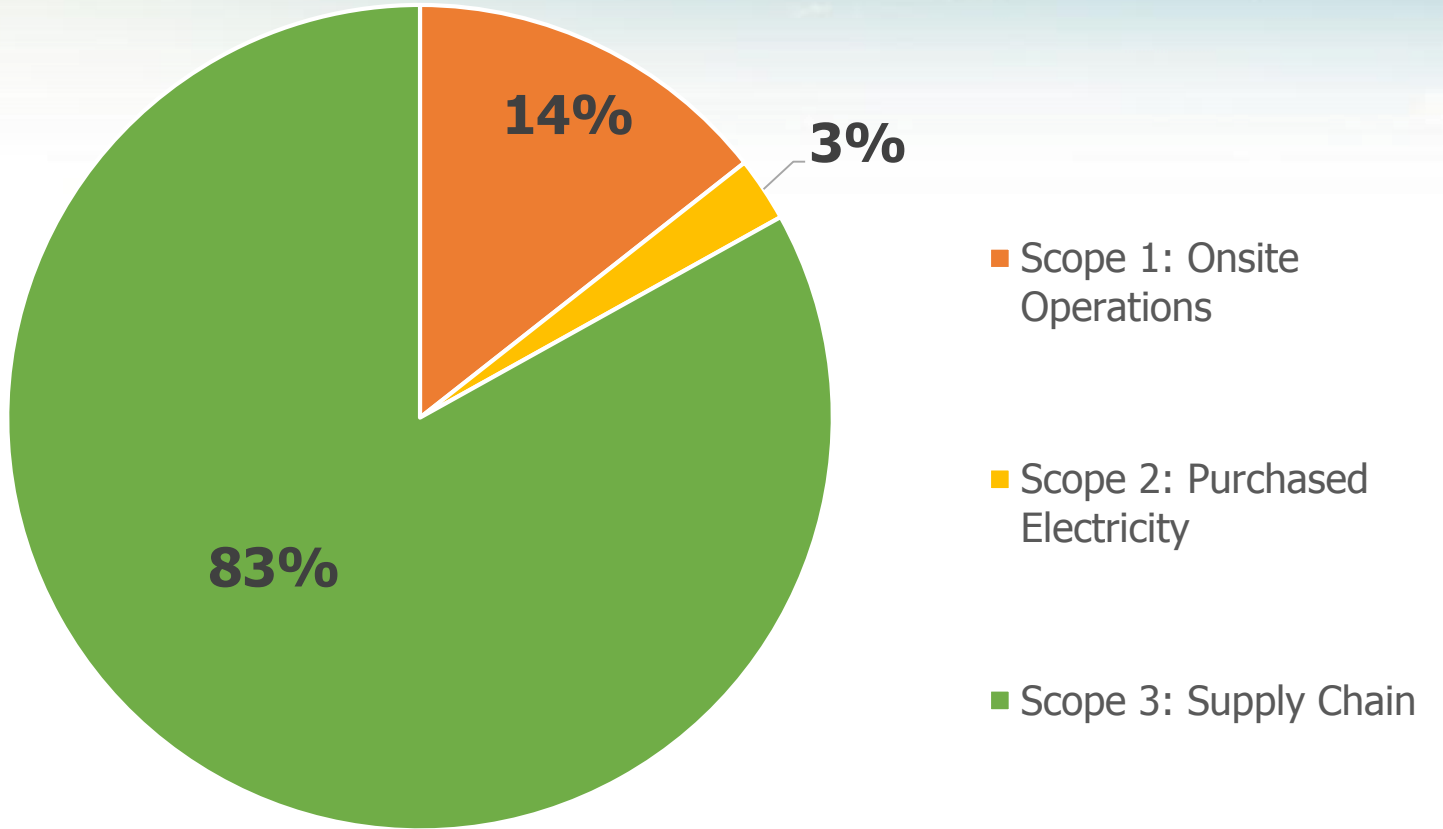


GHG EMISSIONS

Total: 130,000 metric tons CO₂e

=

Energy consumed by 15,600 homes in one year



Scope 3 comprised mostly of malt, packaging materials, transportation & refrigeration

A person with long dark hair, wearing a maroon long-sleeved shirt, olive green shorts, and a large olive green backpack, is hiking on a rocky trail. The sun is low on the horizon, creating a warm, golden glow over the desert landscape. The trail is made of dirt and small rocks, and there are some larger rocks scattered along the path. In the background, there are more hills and mountains under a clear blue sky. A large, semi-transparent white circle is overlaid on the right side of the image, containing the text "Communicating Our Values".

Communicating Our Values





OCEAN FRIENDLY RESTAURANT



- No expanded polystyrene (aka Styrofoam)
- Proper recycling practices are followed
- Real silverware only and to-go utensils available only upon request
- No plastic bags
- Paper straws available only upon request
- No beverages in plastic bottles
- Implement water and energy conservation practices
- Vegetarian and/or vegan options available
- Seafood is "Best Choice" or "Good Alternative"



LOVE WHEN A BOX OF BEER SHOWS UP
@SIERRANEVADA



**WE ARE
STILL IN**

Advocacy & Philanthropy

Industry sustainability

Climate Change / Renewable Energy /
Decarbonization

Clean & Resilient Water Supply

Protection of Public Lands / Land & water
conservation

Zero Waste / Circular Economy

Equitable Access to Outdoor Recreation

Biodiversity / Ecosystem Health

Soil Health, Regenerative Agriculture



INTERACTIVE MAPS!

Chico



Mills River



TOTAL POWER GENERATION

ENERGY SOURCE	KILOWATTS	% OF BREWERY POWER
Capstone Microturbines	1072kW	71%
Solar Arrays	427kW	28%
Total	1499kW	100%



THANK YOU!