

# Circularity at Swinkels Family Brewers

Marthijn Junggeburth  
Sustainability manager



**Royal Swinkels**  
family brewers

## Purpose & Vision

# Seeing the world as our family.

Our goal as an independent, pioneering family of brewers and maltsters is to continually work on smart and sustainable ways to create lasting value. For our consumers, our employees, our relations, our shareholders and the world around us. In doing so, we pass on an even better family business to the next generations.



# Company facts



The ultimate portfolio player  
**300 beers**



**3,000**  
tonnes cereal extract



**818,000**  
hectolitres soft drinks



**ca. 1,800**  
employees



**2 malthouses**  
397,000 tonnes malt



**225**  
craft drinks



**€ 773,2 m.**  
turnover



**7,200,000**  
hectolitres beer



**21**  
family members

# Our priority

Excellence in circularity & meeting the standards for 4 other pillars



## Circularity



Sustainable  
growth



Responsible  
drinking



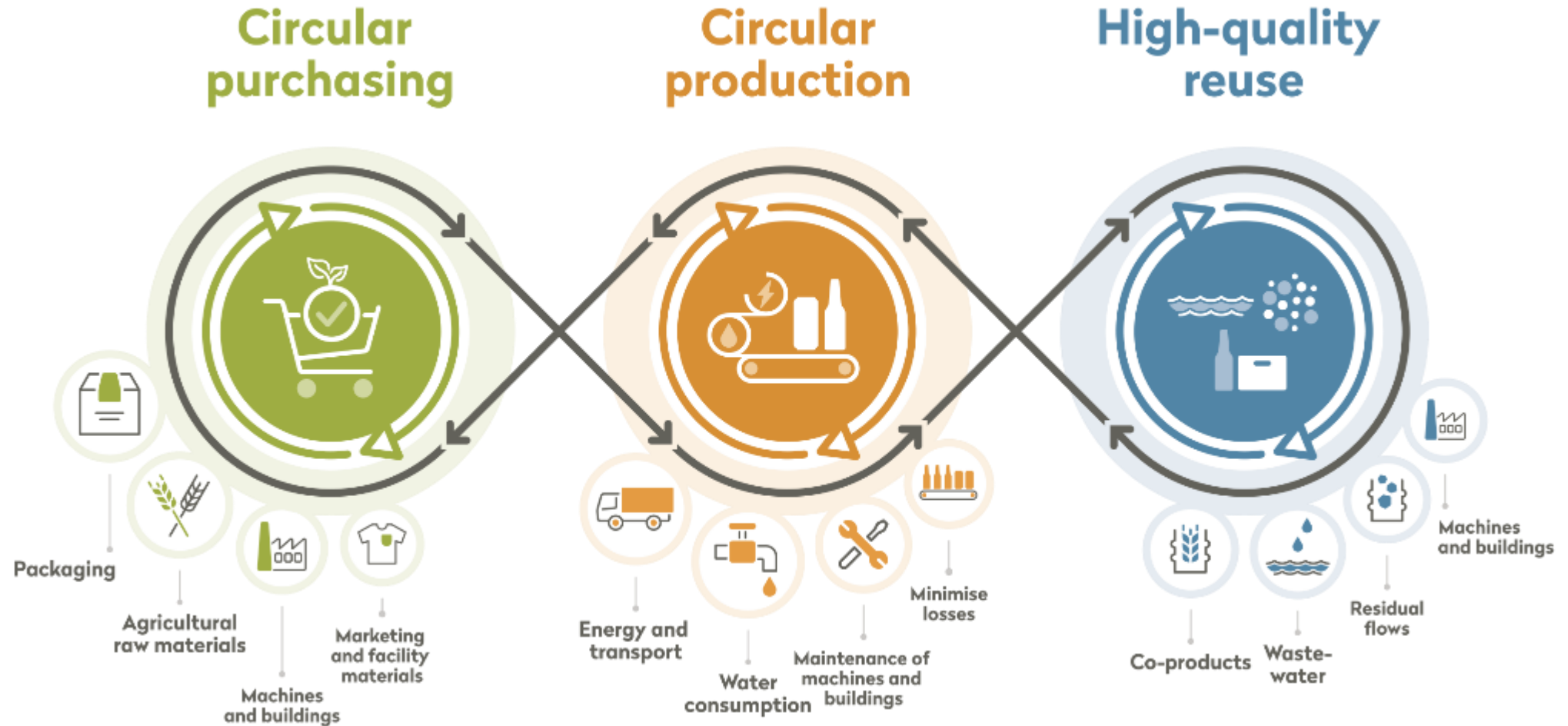
Safety and  
well-being



Local  
involvement



# Swinkels Circularity Index (SCI)







# Farmer Beer Water

Farmers, the Municipality of Laarbeek, Agrifirm, Water Board Aa and Maas, Rabobank, ZLTO and Brewery Bavaria join forces and collaborate intensively on a healthy future.

## Smart collaboration on goals:

- **Healthy and vital soil** > better for the crop, better for the beer.
- **Crop Protection** > Innovative cultivation reduces the use of crop protection agents.
- **Water** > Enough water of good quality for all users.
- **Brewing barley** > Making growing barley extra profitable for local farmers.







Farmer Beer Water:

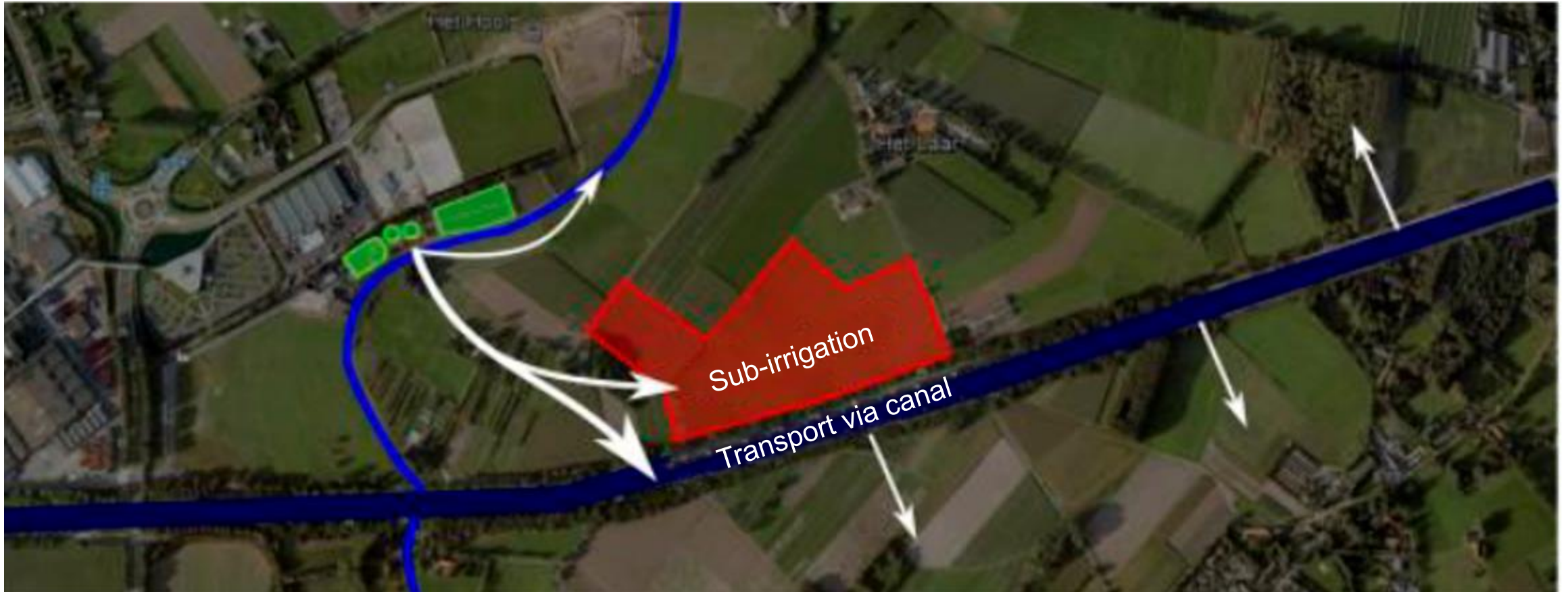
Residual water from the brewery for agriculture.

**Boer Bier Water**

**Restwater uit de brouwerij voor de landbouw**

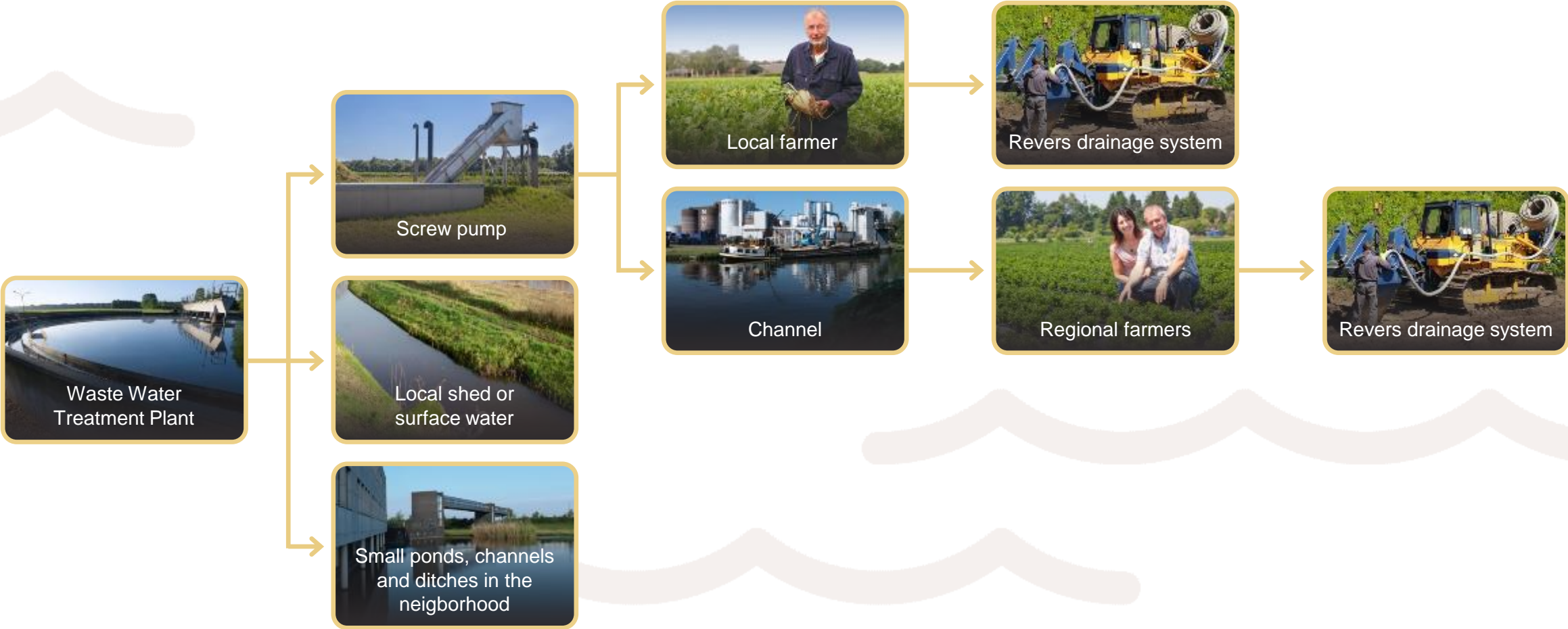


# Farmer Beer Water Data collection

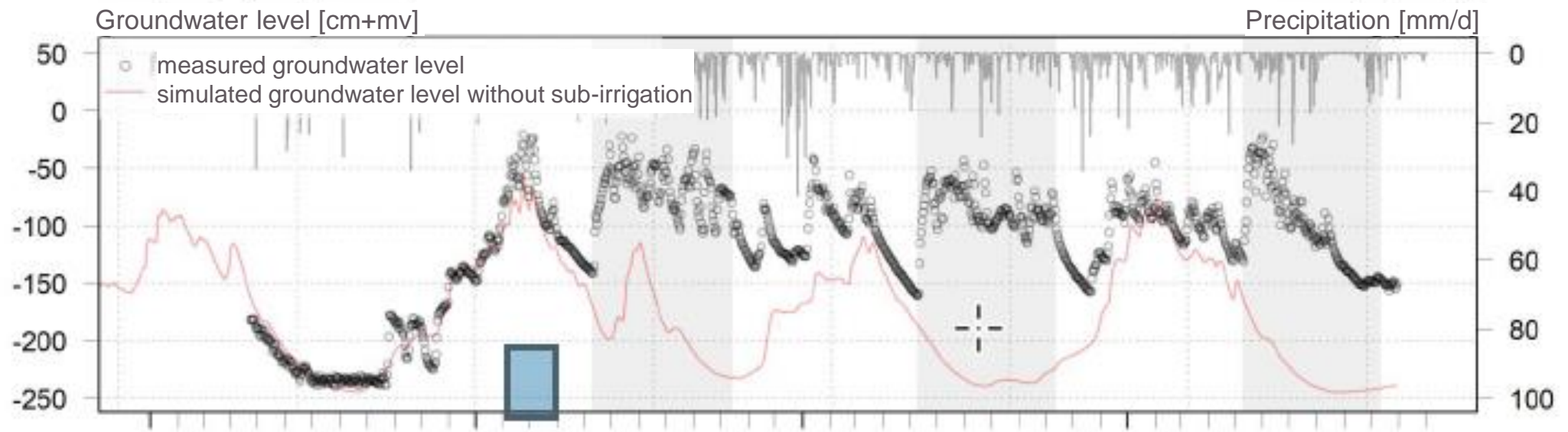




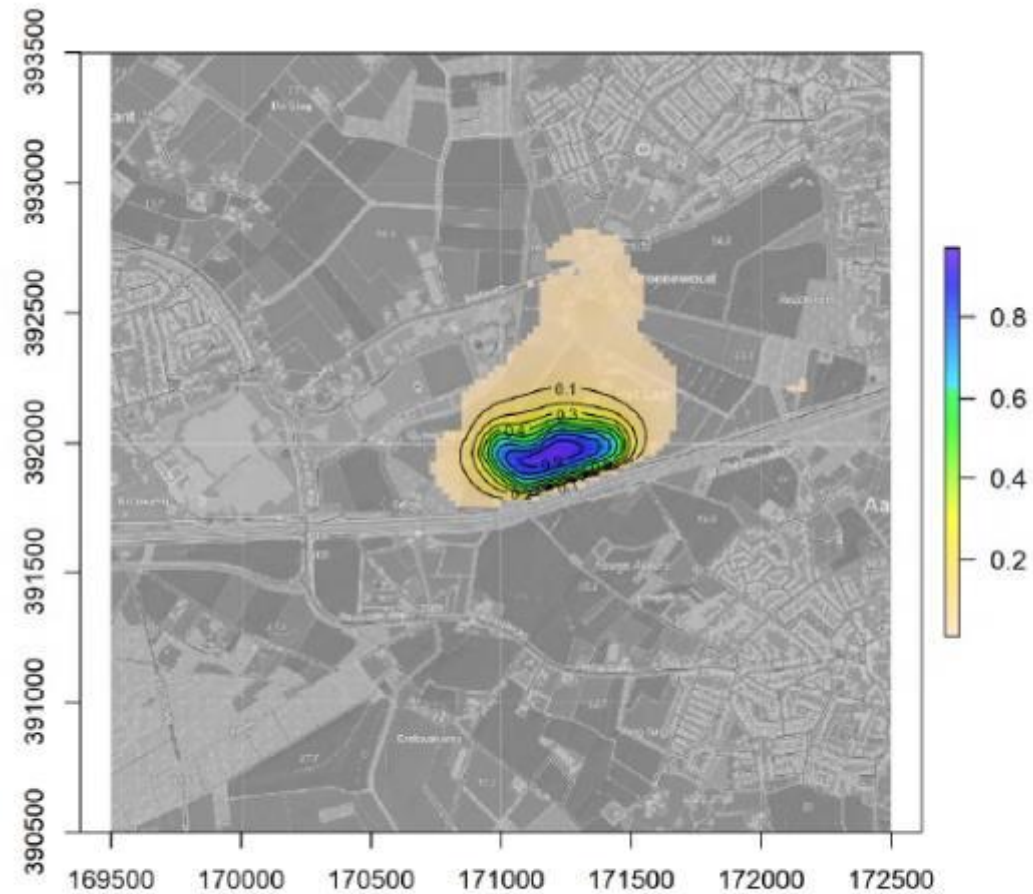
# Distribution of water



# Farmer Beer Water Data collection



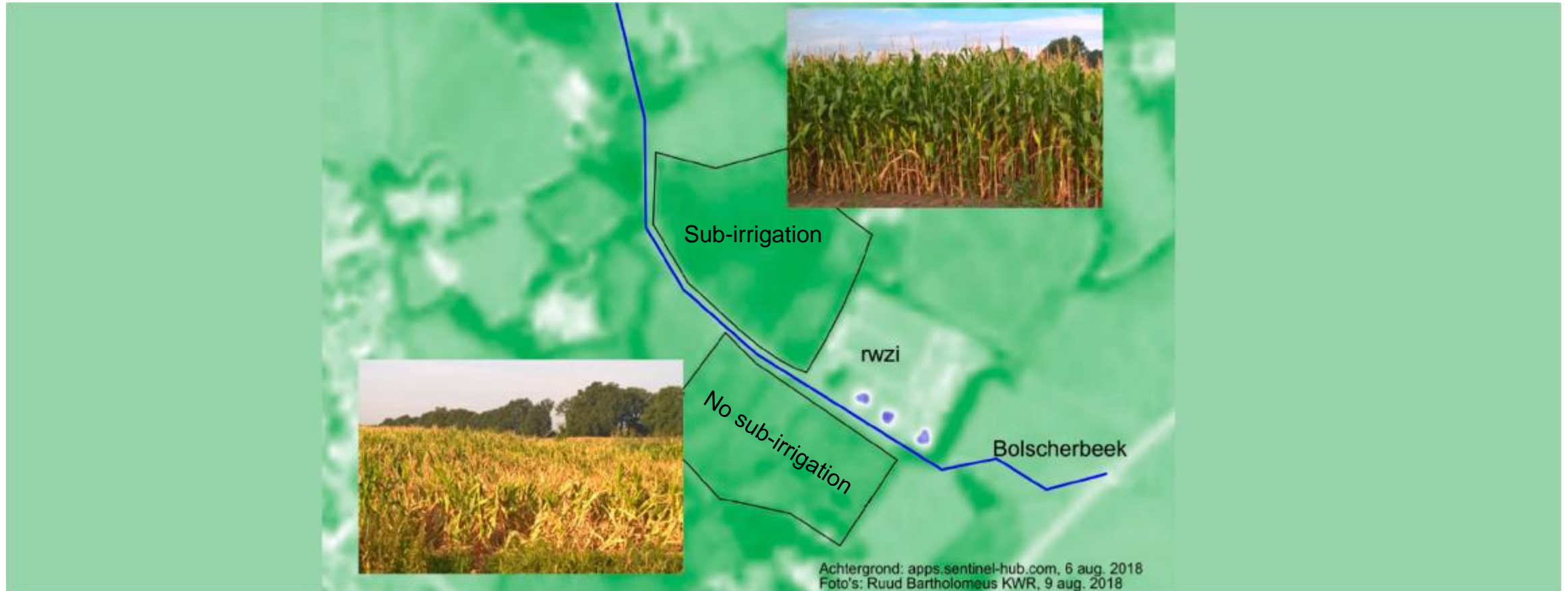
# Farmer Beer Water Data collection



*Groundwater level rise (in meters) as a result of sub-irrigation (modeled)*



# Results



# Realised in 2020

**In 2020 approx. 800,000 m<sup>3</sup>  
of treated wastewater**

was returned to the soil.

Despite the drought, farmers still had  
a good harvest because of this.

**15 new farmers joined project**  
→ more plots and therefore  
**more water returned  
to the soil.**



[swinkelsfamilybrewers.com](http://swinkelsfamilybrewers.com)

